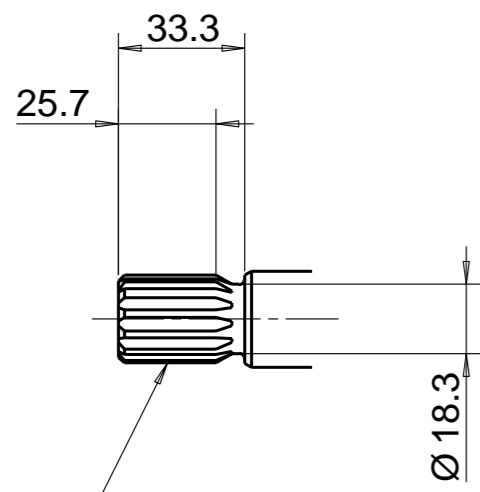


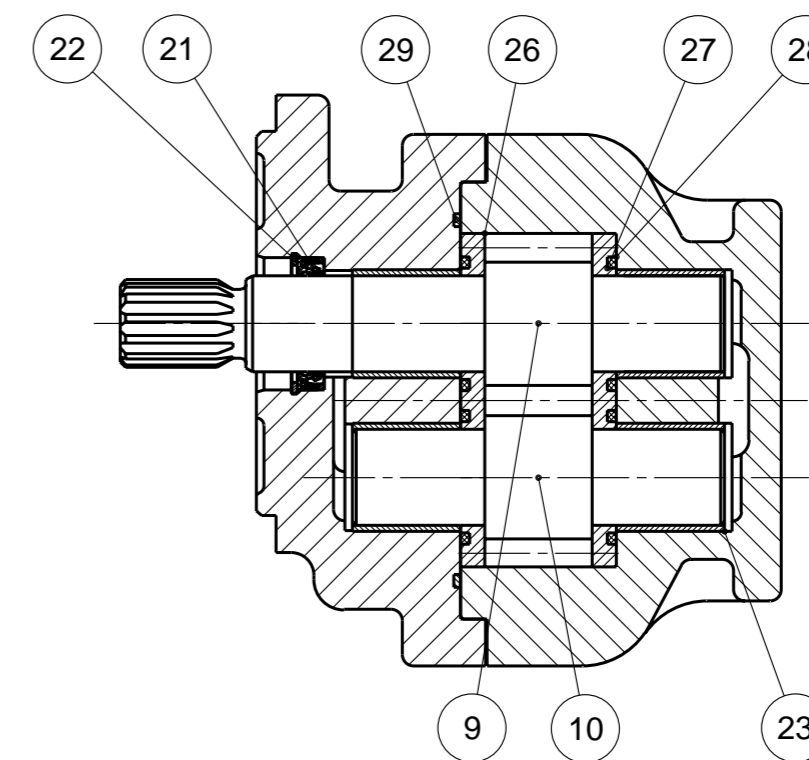
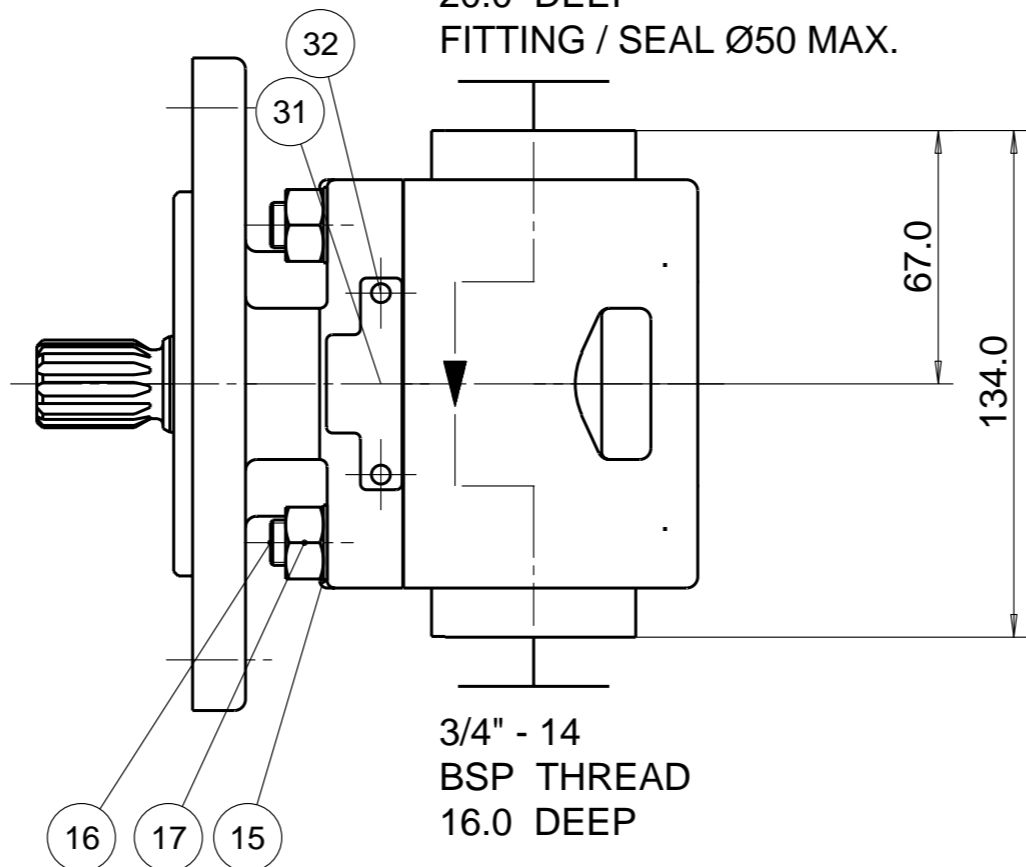
PUMP DATA	
DISPLACEMENT	26,0 ccm
MAX. PRESSURE	275 bar
SPEED RATE	500 TO 3000 min ⁻¹
MAX. INPUT SHAFT TORQUE	272 Nm
ROTATION	CLOCKWISE

SEAL KIT
8682-023-00V



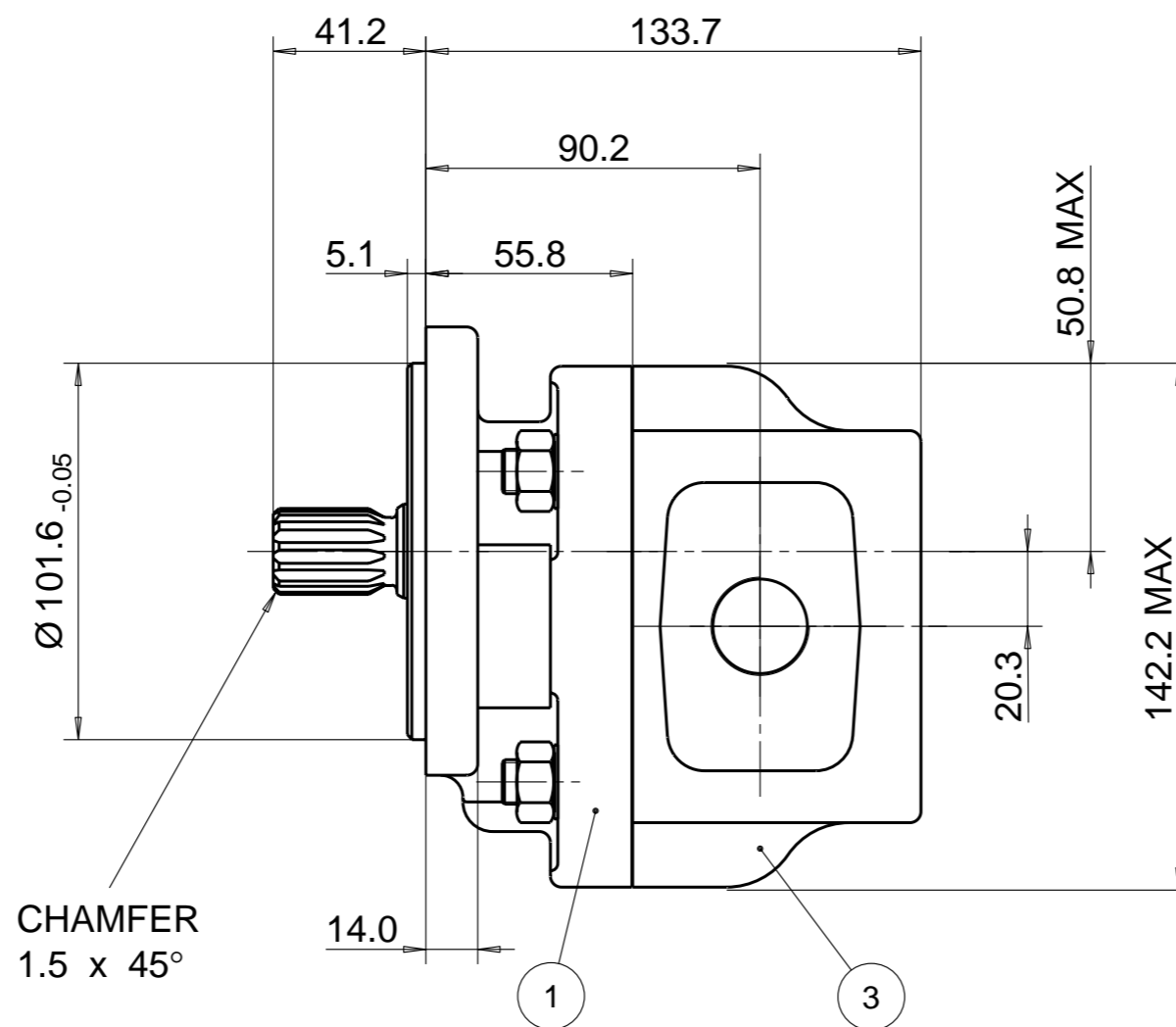
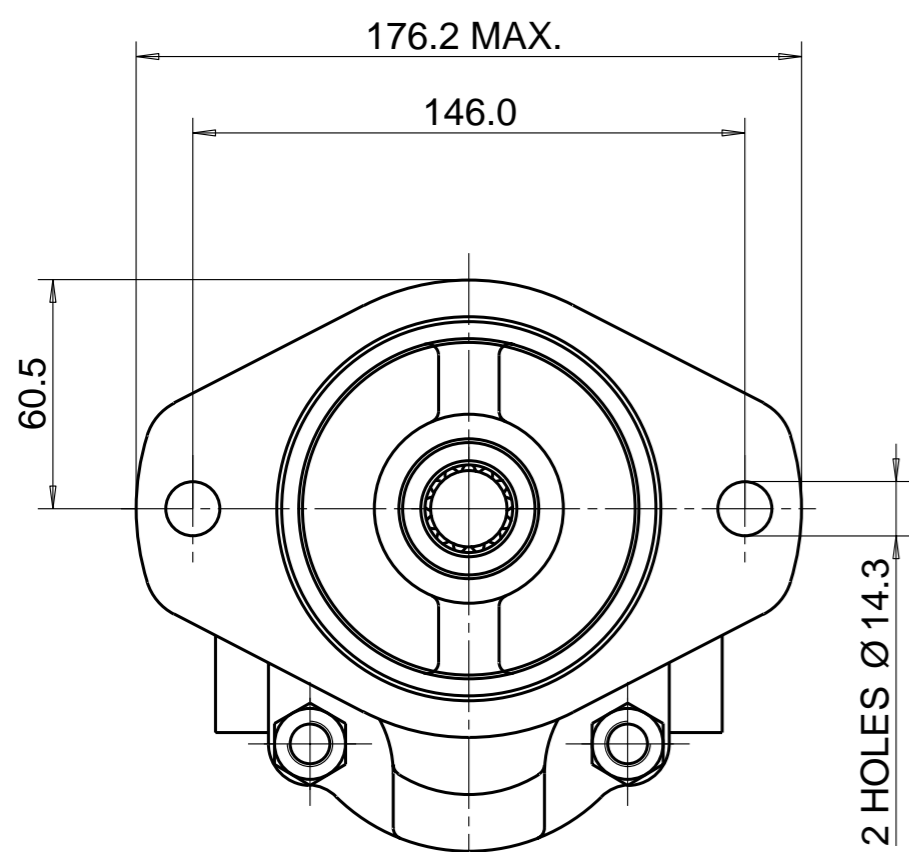
SAE INVOLUTE SPLINE
13 TEETH - 16/32 PITCH
FLAT ROOT SIDE FIT
MAJOR DIA 21.67-21.79
MINOR DIA 18.631 MAX.

1 1/4" - 11
BSP THREAD
20.0 DEEP
FITTING / SEAL Ø50 MAX.



NOTE

- 1 FOR ASSEMBLY INSTRUCTIONS SEE DWG. NO. "620-B1" "PGP620 PUMP ASSEMBLY INSTRUCTIONS".
- 2 NAMEPLATE LOCATION MAY VARY DUE TO DESIGN CRITERIA OR MANUFACTURING LOCATION. STICKER OPTIONAL FOR #31 & #32



28	8682-015-00Q	2	SEAL. ELEM.	36			
27	8682-016-00L	2	SEAL. ENERG	35			
26	391 2185 150	2	BAL. PLATE	34			
25				33			
24				32	391 1432 004	2	SCREW. DR.
23	391 0482 237	4	BUSH	31	391 2183 227	1	NAMEPLATE
22	9211-530-006	1	CIRCLIP	30			
21	8682-119-00W	1	SEAL. LIP	29	9312-641-004	1	SEAL. SECT.
ITEM	PART NO	REQD		ITEM	PART NO	REQD	

20							
19							
18							
17	391 1451 149	4	M12 NUT				
16	8682-007-00M	4	M12 SCREW				
15	9222-575-009	4	WASHER				
14							
13							
12							
11							
10	702 2726 000	1	DRIVEN GEAR				
9	702 1126 400	1	DRIVE GEAR				
8							
7							
6							
5							
4							
3	702 8926 019	1	BODY				
2							
1	2PRF03S1M	1	FLANGE				
ITEM	PART NO	REQ'D		ITEM	PART NO	REQ'D	DESCRIPTION

WITH EXCEPTION OF DRIVE SHAFT, FLANGE SPIGOT AND MTG. FACE
PLUS AREAS AROUND PORTS, ALL SURFACES ARE PAINTED
BLACK ZSS - A1 (AA-O-05.2)

THIRD ANGLE PROJECTION

EXP NO.	
FIRST USED	
16 - 04 - 616	
702 9111 332	
SYM.	REVISIONS

THIS DOCUMENT CONTAINS INFORMATION THAT IS CONFIDENTIAL AND PROPRIETARY TO PARKER-HANNIFIN CORPORATION ("PARKER"). THIS DOCUMENT IS FURNISHED ON THE UNDERSTANDING THAT THE DOCUMENT AND THE INFORMATION IT CONTAINS WILL NOT BE COPIED OR DISCLOSED TO OTHERS OR USED FOR ANY PURPOSE OTHER THAN CONDUCTING BUSINESS WITH PARKER, AND WILL BE RETURNED AND ALL FURTHER USE DISCONTINUED UPON REQUEST BY PARKER. ALL RIGHTS RESERVED.

PGP620A0260CD1H3VE7E5B1B1

MATERIAL	ADM CTR P	TOLERANCES UNLESS OTHERWISE SPECIFIED = REF. DIMENSIONS	DR.BY JS	DATE 18APR16	CH.BY AS	DATE 18APR16	SCALE 1/2
H.E.-STD:	REV DTE 000000	DIMENSIONS ARE MM	702 9111 332		© 2016 Parker Hannifin Corporation		
	WT 12.3 kg						

